

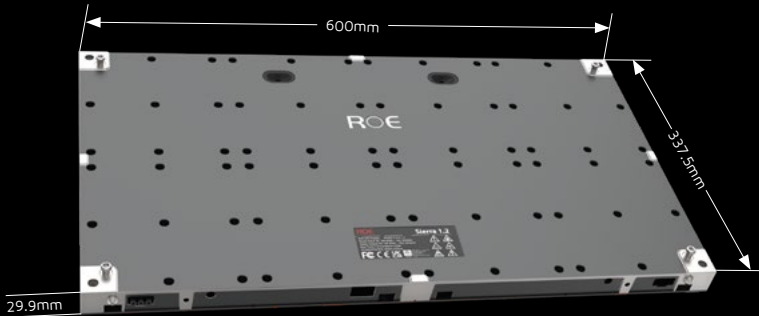
Specifications

Version: ROE250516

Sierra	Sierra 1.2
Pixel Pitch	1.25mm
Max Brightness Calibrated	1000nits
Panel Dimension	600mm x 337.5mm x 29.9mm   23.62" x 13.29" x 1.18"
Panel Resolution (H x V)	480 x 270
Panel Weight	5.68kg; 12.52lbs
Power Consumption Max / Average	100W / 50W
BTU Max / Average	340 / 170
Transparency	Solid
Serviceability	Front
LED Configuration	Flip chip 4 in 1 LED
Viewing Angle Horizontal	170°
Viewing Angle Vertical	170°
Refresh Rate	3840Hz
Gray Scale	15bit
Frame Material	Aluminum Alloy
Installation	Wall Mounting
Processing Platform	Megapixel VR
Operational Temp / Humidity	-20°~45°C, 10~90%RH   -4°~113°F, 10~90%RH
Storage Temp / Humidity	-40°~60°C, 10~90%RH   -40°~140°F, 10~90%RH
IP Rating	IP40

Notes: The specifications are for reference, actual values may vary.

Dimensions



www.roevisual.com

ROE China | ROE US | ROE EU | ROE UK | ROE JP | ROE ME | ROE AUS  
roe@roevisual.com



Sierra 1.2

Studio-grade Performance,  
Everyday Efficiency

INDOOR FIXED INSTALL



# Designed for Broadcast, Built for More

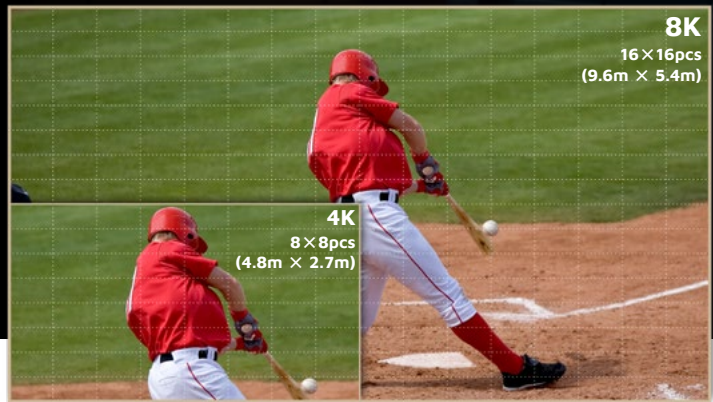
ROE Visual presents the next chapter in innovative LED technology with Sierra. Fitted with flip-chip 4-in-1 LED technology, Sierra offers reduced reflection, sharp contrast, and a flawless black surface. Initially engineered for the controlled conditions of broadcast studios, Sierra's advanced LED technology excels in any high-brightness setting. With superior contrast and seamless integration capabilities, it's a powerful solution for modern visual systems.

## Energy Efficiency Redefined

Sierra leverages common cathode and flip-chip Micro LED technology, paired with a highly efficient power supply, to reduce energy consumption by up to 40%. Its consistently low operating temperatures enhance color performance and significantly extend the panel's lifespan.

40%  
reduction

Sierra 16:9 ratio



Low profile  
panel design

16:9 ratio  
in panel design.  
Native 4K

16:9

Highly efficient  
power supply



Low  
scan ratio



Front  
service



HDR  
technology

HDR

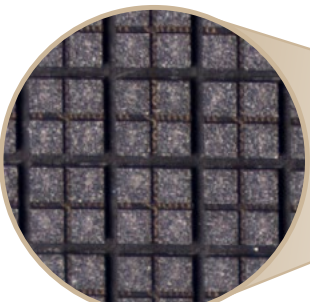
Low scan ratio minimizes screen flicker and reduces visible scan lines on camera, making it ideal for TV studios, broadcast stations, and other in-camera environments.

## Striking Contrast and In-camera Perfection

Sierra combines an optimized scan ratio with a deep black, anti-reflective surface and 4-in-1 LEDs to deliver stunning visuals for outstanding in-camera performance.

## Sleek Design Meets Precision

With a slim profile of just 55mm after installation, Sierra panels combine modern elegance with functionality. Featuring a standard 16:9 aspect ratio and dimensions of 600mm x 337.5mm, they are designed for seamless integration. The high-precision mounting frame ensures effortless installation, making them a perfect fit for any space.



Flip chip 4 in 1 LED

